

# 201 NEWBURY STREET

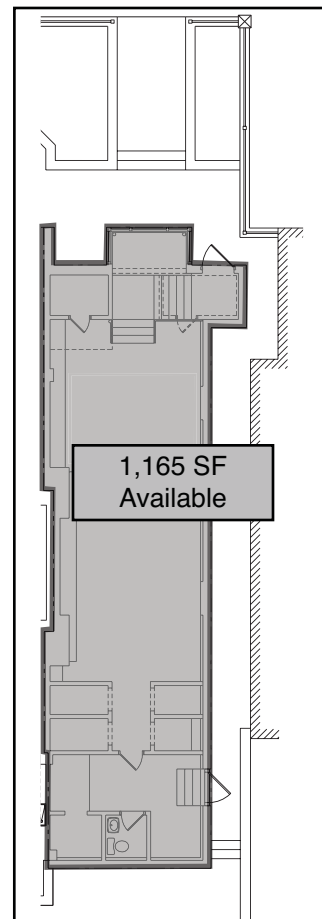
Back Bay, Boston, Massachusetts



201 NEWBURY ST., Boston, MA, is located at the intersection of Newbury St. and Exeter St., one of the Back Bay's busiest intersections.

- ▶ The space where Betsy Johnson currently resides provides +/- 1,165 SF
- ▶ Other retailers within a 1-2 radius block include Zara, Niketown, Ted Baker, AG Jeans, American Eagle, Inermix, Joe's American Bar & Grill, Stephanie's on Newbury, Jack Wills and Timberland (coming soon).

## NEWBURY STREET



Floor Plans

Lower  
Level



# 201 NEWBURY STREET

Back Bay, Boston, Massachusetts

(UP) ARDEN GALLERY, (DN) SABON  
131 - (UP) coming soon **Levi's**, (DN) WINSTON FLOWERS

133 - (UP) **in the pink**  
(DN) FOOTSTOCK

135 - (1) ENZO & CO. SALON  
(DN) **poggen**  
**pohl**

139 - (1) **LONG CHAMP**  
PARIS **CAMPER**

141 - (1) **VACANT**, (1) HOTEL CHOCOLAT

143 - (1) DIEGO, BRODNEY ANTIQUES

159 - (1) **MET BAR**

**JUDI ROTENBERG GALLERY** (UP) - 130  
**shu uemura** (DN)  
tokyo paris new york

**ACOTE SALON** (2) - 132  
**REISS** (1)  
**THAI BASIL** (DN)

**ROFFI SALON** (2) - 134  
**SERENELLA** (UP)  
**Barbour** (DN)

SCHOOL OF FASHION DESIGN - 136

**American Apparel™** **ea** (1) - 138

**UNITED COLORS OF BENETTON.** (1) - 140

**SMALL PLEASURES** (1) - 142

**MADURA** (1), **LOLITA COCINA & TEQUILA BAR** (DN) - 144

581 - (1) **TD**

583 - (1) **COPLEY FLAIR**

587 - (1) **CVS**  
pharmacy

601 - (1) **copy cop**

607 - (1) **Citizens Bank**  
Not your typical bank.™

## DARTMOUTH STREET

149 - FITZIN PARKING

159 - (DN-UP) **PAPA RAZZI**

161 - (UP) **VICTORIA MUNROE GALLERY**  
(DN) O & CO.

163 - (UP) **DOYLE & CO.**  
(DN) **ROCK PAPER SCISSORS SALON**

165 - (1) **Starbucks**

167 - (UP) **DTR MODERN GALLERY**  
(DN) **VACANT**

169 - (UP) **CHILDS GALLERY**

171 - (UP) **PETIT BATEAU**  
(DN) **PUCKER GALLERY**

173 - (UP) coming soon **DUXIANA**  
(DN) **THY'S NAILS**

175 - (UP) **SOCIETY OF ARTS AND CRAFTS**  
(DN) **THE CLOSET**

177 - (1) **VACANT**

179 - (UP) coming soon **Jack Wills**  
Homespun Clothing

181 - **JOE'S AMERICAN BAR & GRILL**

**Ben Sherman** (1) - 154

**pinkyotto** (UP) - 156

**VACANT** (DN)

**COPLEY SOCIETY GALLERY** (1) - 158

**VACANT** (UP) - 160

**S.KUHLMAN** (DN)

**THE GUILD OF BOSTON ARTISTS** (1) - 162

**LUIZ SALON** (2) - 164  
Cynthia Rowley (UP)

**LAUREN'S NAIL & SKIN SALON** (DN) - 164

**LUSH** (UP), **SARNI CLEANERS** (DN) - 166

**MIA'S NAIL SALON** - 168

**COTELAC** (UP)

**JAMES JOSEPH SALON** (DN)

**LISA'S NAILS** (UP) - 170

**SOO DEE** (DN)

**Salt** - 172

**COHEN'S FASHION OPTICAL** (UP)

**BASIQUES** (DN)

**LISE SALON** - 174

**NEWBURY KITCHENS** (UP)

**BEN&JERRY'S** (DN)

**SALON MONET** (2) - 176

**SECOND TIME AROUND** (UP-DN)

**ALDO** (1) - 180

**sunglass hut** (1) - 182

**ALDO ACCESSORIES** (1) - 184

**INTERMIX** (1) - 186

**STEPHANIE'S ON NEWBURY** (1) - 190

OLD SOUTH CHURCH

647 - **at&t**  
**THE CLOUD FOUNDATION**

651 - (1) **BANGKOK BLUE**

657 - **CHARLESMARK HOTEL**

659 - (1) **RITZ CAMERA**

665 - (1) **NEW ENGLAND DENTAL**

667 - (1) **SUGAR HEAVEN**

673 - (1) **MARATHON SPORTS**

699 - (1) **LENSCRAFTERS**  
(G) **MORTON'S STEAKHOUSE**

673 - (OFFICES) **ONE EXETER TOWER**

673 - (1) **Bank of America**

## EXETER STREET

201 - **UNITED BAKER**  
LONDON

201 - (UP) **AC**

201 - (UP) **FRANCOISE**

201 - (DN) **WINE BAR**

205 - (UP) **INTERNATIONAL POSTER GALLERY**  
(DN) **SUNERI BOUTIQUE**

207 - (DN-UP) **HEMPEST**

209 - (UP) **COPLEY SQUARE ASSOCIATES APARTMENTS**

211 - (UP) **L'ATTITUDE ART AND SCULPTURE**  
(DN) **NEWBURY 211 FASHION AND JEWELRY**

213 - (UP) **ROKAS FINE ART**  
(DN) **CABOT & CABOT REAL ESTATE**

215 - **NAILS & SPA**  
(UP) **KITCHEN ARTS**  
(DN) **NEWBURY VISIONS**

217 - (UP) **FOR URBAN PETS**, (DN) **WARLOX WIRELESS**

219 - **FAIRFIELD APARTMENTS**, (UP) **SECOND TIME AROUND**  
(DN) **BUSH CLEANERS**

221 - (UP) **DRESS**  
(DN) **LA TETE SALON**

223 - (UP) **CLASSIC TUXEDO**, (DN) **LIT**

**NIKE TOWN** (1-3) - 200

**FRENCH CONNECTION** (1-2) - 208

**ZARA** (1) - 210

**WELLESLEY OPTICAL** (UP) - 216  
**ECCO** (DN)

**VACANT** - 218-220

**UPPER CRUST** (UP) - 222  
**FOR EYES** (DN)

**PIATINI CAFE** (UP) - 224  
**JENNIFER NAILS & SKIN** (DN)

**TANORAMA** (up) - 226  
**PIATINI WINE CAFE** (DN)

**SLEEK MED SPA** (1) - 228

715 - (1-2) **THE TANNERY**

715 - (1) **DUNKIN' DONUTS**

719 - (1) **STORE24, TYPHOON**

731 - (1) **PIZZERIA UNO**

745 - (1) **TRAVELEX**  
(1) **CIGAR MASTERS**  
(1) **BEST CELLARS WINES**  
(1) **verizon** wireless  
(1) coming soon **MAX BRENNER**

755 - (1-2) **VOX POPULI**  
(1) **Starbucks**

761 - (1-2) **ATLANTIC FISH CO.**

777 - (1-3) **Crate&Barrel**