

# 201 NEWBURY STREET

Back Bay, Boston, Massachusetts

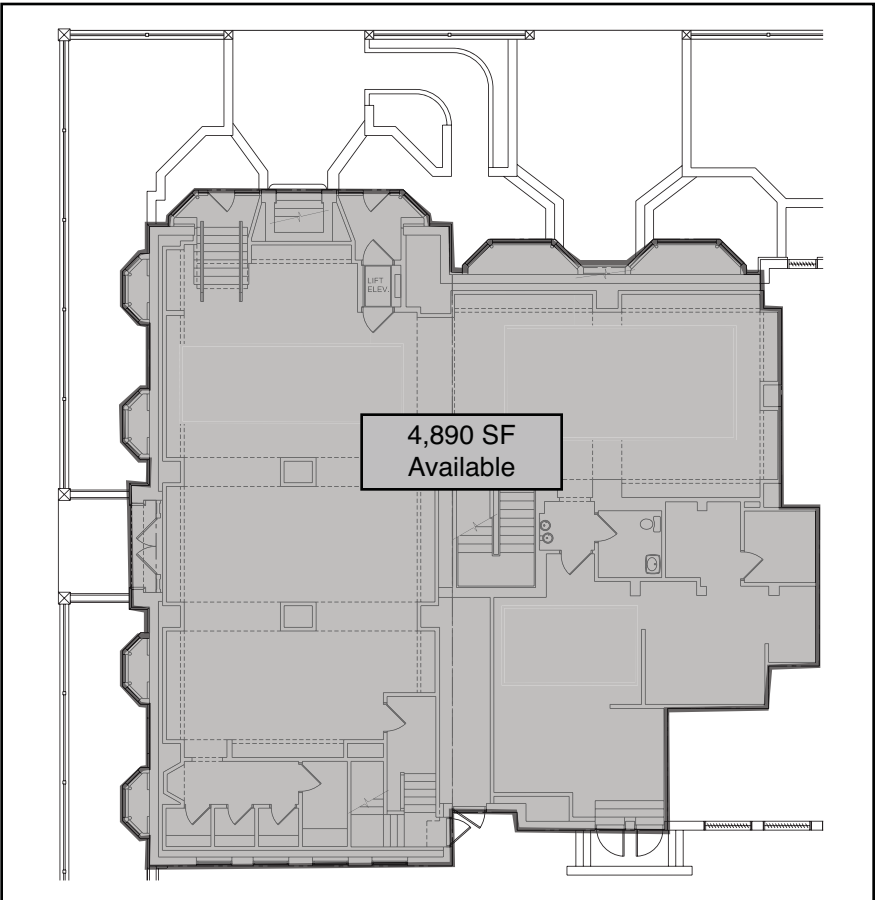


201 NEWBURY STREET, Boston, MA, is located at the intersection of Newbury Street and Exeter Street one of the Back Bay's busiest intersections.

- ▶ Total space available:
  - +/- 4,890 square feet on the walk-down street level
- ▶ Other retailers within a 1-2 radius block include Zara, Niketown, Ted Baker, Duxiana, Starbucks, Inermix, Joe's American Bar & Grill, Stephanie's on Newbury, Jack Wills and Timberland (coming soon).
- ▶ Available upon lease execution.



Floor Plans



# 201 NEWBURY STREET

Back Bay, Boston, Massachusetts

(UP) ARDEN GALLERY, (DN) SABON  
131 - (UP) coming soon **Levi's**, (DN) WINSTON FLOWERS  
133 - (UP) **in the pink**  
(DN) FOOTSTOCK  
135 - (1) ENZO & CO. SALON  
(DN) **poggen**  
**pohl**  
139 - (1) **LONG CHAMP** PARIS **CAMPER**  
141 - (1) **VACANT**, (1) HOTEL CHOCOLAT  
143 - (1) DIEGO, BRODNEY ANTIQUES  
159 - (1) **MET BAR**

JUDI ROTENBERG GALERY (UP) - 130  
shu uemura (DN)  
tokyo parts newyork  
ACOTE SALON (2) - 132  
**REISS** (1)  
**THAI BASIL** (DN)  
ROFFI SALON (2) - 134  
**SERENELLA** (UP)  
**Barbour** (DN)  
SCHOOL OF FASHION DESIGN - 136  
**American Apparel™** **aa** (1) - 138  
**UNITED COLORS OF BENETTON** (1) - 140  
**SMALL PLEASURES** (1) - 142  
**MADURA** (1), **LOLITA COCINA & TEQUILA BAR** (DN) - 144

581 - (1) **TD**  
583 - (1) **COPLEY FLAIR**  
587 - (1) **CVS pharmacy**  
601 - (1) **copy cop**  
607 - (1) **Citizens Bank**  
Not your typical bank®

## DARTMOUTH STREET

149 - FITZIN PARKING  
159 - (DN-UP) **PAPA RAZZI**  
161 - (UP) VICTORIA MUNROE GALLERY  
(DN) **O & CO.**  
163 - (UP) **DOYLE & CO.**  
(DN) **ROCK PAPER SCISSORS SALON**  
165 - (1) **Starbucks**  
167 - (UP) **DTR MODERN GALLERY**  
(DN) **VACANT**  
169 - (UP) **CHILDS GALLERY**  
171 - (UP) **PETIT BATEAU**  
(DN) **PUCKER GALLERY**  
173 - (UP) coming soon **DUXIANA**  
(DN) **THY'S NAILS**  
175 - (UP) **SOCIETY OF ARTS AND CRAFTS**  
(DN) **THE CLOSET**  
177 - (1) **VACANT**  
179 - (UP) coming soon **Jack Wills**  
*Heritage Collection*  
181 - **JOE'S AMERICAN BAR & GRILL**

**Ben Sherman** (1) - 154  
**pinkyotto** (UP) - 156  
**VACANT** (DN)  
**COPLEY SOCIETY GALLERY** (1) - 158  
**VACANT** (UP) - 160  
**S.KUHLMAN** (DN)  
**THE GUILD OF BOSTON ARTISTS** (1) - 162  
**LUIZ SALON** (2) - 164  
**Cynthia Rowley** (UP)  
**LAUREN'S NAIL & SKIN SALON** (DN) - 164  
**LUSH** (UP), **SARNI CLEANERS** (DN) - 166  
**MIA'S NAIL SALON** - 168  
**COTELAC** (UP)  
**JAMES JOSEPH SALON** (DN)  
**LISA'S NAILS** (UP) - 170  
**SOO DEE** (DN)  
**welt** - 172  
**COHEN'S FASHION OPTICAL** (UP)  
**BASIQUES** (DN)  
**LISE SALON** - 174  
**NEWBURY KITCHENS** (UP)  
**BEN&JERRY'S** (DN)  
**SALON MONET** (2) - 176  
**SECOND TIME AROUND** (UP-DN)  
**ALDO** (1) - 180  
**sunglass hut** (1) - 182  
**ALDO ACCESSORIES** (1) - 184  
**INTERMIX** (1) - 186  
**STEPHANIE'S ON NEWBURY** (1) - 190

OLD SOUTH CHURCH  
647 - **at&t**  
**THE CLOUD FOUNDATION**  
651 - (1) **BANGKOK BLUE**  
657 - **CHARLESMARK HOTEL**  
659 - (1) **RITZ CAMERA**  
665 - (1) **NEW ENGLAND DENTAL**  
667 - (1) **SUGAR HEAVEN**  
673 - (1) **MARATHON SPORTS**  
699 - (1) **LENSCRAFTERS**  
(G) **MORTON'S STEAKHOUSE**  
763 - (OFFICES) **ONE EXETER TOWER**  
763 - (1) **Bank of America**

## EXETER STREET

**201 NEWBURY**  
201 - (UP) **AC**  
201 - (UP) **AC**  
201 - (DN) **AC**  
205 - (UP) **INTERNATIONAL POSTER GALLERY**  
(DN) **SUNERI BOUTIQUE**  
207 - (DN-UP) **HEMPEST**  
209 - (UP) **COPLEY SQUARE ASSOCIATES APARTMENTS**  
211 - (UP) **L'ATTITUDE ART AND SCULPTURE**  
(DN) **NEWBURY 211 FASHION AND JEWELRY**  
213 - (UP) **ROKAS FINE ART**  
(DN) **CABOT & CABOT REAL ESTATE**  
215 - **NAILS & SPA**  
(UP) **KITCHEN ARTS**  
(DN) **NEWBURY VISIONS**  
217 - (UP) **FOR URBAN PETS**, (DN) **WARLOX WIRELESS**  
219 - **FAIRFIELD APARTMENTS**, (UP) **SECOND TIME AROUND**  
(DN) **BUSH CLEANERS**  
221 - (UP) **DRESS**  
(DN) **LA TETE SALON**  
223 - (UP) **CLASSIC TUXEDO**, (DN) **LIT**

**NIKE TOWN** (1-3) - 200  
**FRENCH CONNECTION** (1-2) - 208  
**ZARA** (1) - 210  
**WELLESLEY OPTICAL** (UP) - 216  
**ecco** (DN)  
**VACANT** - 218-220  
**UPPER CRUST** (UP) - 222  
**FOR EYES** (DN)  
**PIATINI CAFÉ** (UP) - 224  
**JENNIFER NAILS & SKIN** (DN)  
**TANORAMA** (up) - 226  
**PIATINI WINE CAFÉ** (DN)  
**SLEEK MED SPA** (1) - 228

715 - (1-2) **THE TANNERY**  
715 - (1) **DUNKIN' DONUTS**  
719 - (1) **STORE24, TYPHOON**  
731 - (1) **PIZZERIA UNO**  
745 - (1) **TRAVELEX**  
(1) **CIGAR MASTERS**  
(1) **BEST CELLARS WINES**  
(1) **verizon wireless**  
(1) coming soon **MAX BRENNER**  
755 - (1-2) **VOX POPULI**  
(1) **Starbucks**  
761 - (1-2) **ATLANTIC FISH CO.**  
777 - (1-3) **Crate&Barrel**